



AT
LIGHT OF CHRIST PARISH
DEERFIELD, MI



LIGHT OF CHRIST
CATHOLIC PARISH

In 2003 St. Alphonsus Church, at the direction of the diocese, created a Pastoral Plan that addressed the needs of the parish as we planned for our future. One of the goals of this plan called for the establishment of a Steering Committee to *“Study the need/feasibility of building additional space for programs, classrooms and a social center.”*

In August of 2004 the Steering Committee was formed and began to address this goal with great dedication and energy. The work of the committee resulted in the construction of the SALT Center - a parish hall which can accommodate up to 220 people - completed in 2007, the construction of permanent classrooms in the Church basement, and the renovation and updating of the parish offices and meeting rooms in the Parish Center completed in 2008.

The final aspect of this work is the formal landscaping project that enhanced and beautified our parish campus, but also contributed to the aesthetic impact of the larger community. This project was completed in the summer of 2009.

The landscaping project incorporates paved walkways and planted areas that may be sponsored by individuals, families or corporate groups. The brick pavers can be engraved to memorialize and/or honor family members and friends. The planted areas have markers that allow for the same. Funds raised in the sale of these bricks and markers assist in the upkeep of the Garden.

In 2010 St. Alphonsus Parish in Deerfield merged with St. Peter the Apostle Parish in Blissfield. The Heritage Garden subsequently became part of this new entity and is now known as the Heritage Garden of Light of Christ Parish.

Every year in conjunction with Memorial Day, pavers are available to be purchased. If you are interested in purchasing an engraved paver please fill out the form on this brochure and drop it off at the office or send it in the mail. If you have questions, please call the office at 517-447-3500 or 517-486-2156.

Your personal message becomes
a lasting gift and part of the
Heritage Gardens at Light of Christ

Please fill in your inscription in the space provided at right. In addition to letters, numbers, the “and” sign (&), crosses (+) may be used to indicate those who have died, there are also overlapping rings to indicate married couples.

Please deliver or mail this to:
Heritage Gardens at Light of Christ
222 Carey St.
Deerfield, MI 49283
(Make checks payable to Light of Christ)

4 X 8 Commemorative Brick Pavers, three lines of text, 12 characters per line

[illegible]

Name: _____

Address: _____

Phone No. _____



LIGHT OF CHRIST
CATHOLIC PARISH

DONATIONS

4X8 BRICK PAVERS

\$150 Each

Personalize your 4X8 inch brick paver with
up to three lines of text,
12 characters per line

PLANTED AREAS 1-7

\$1000 Each

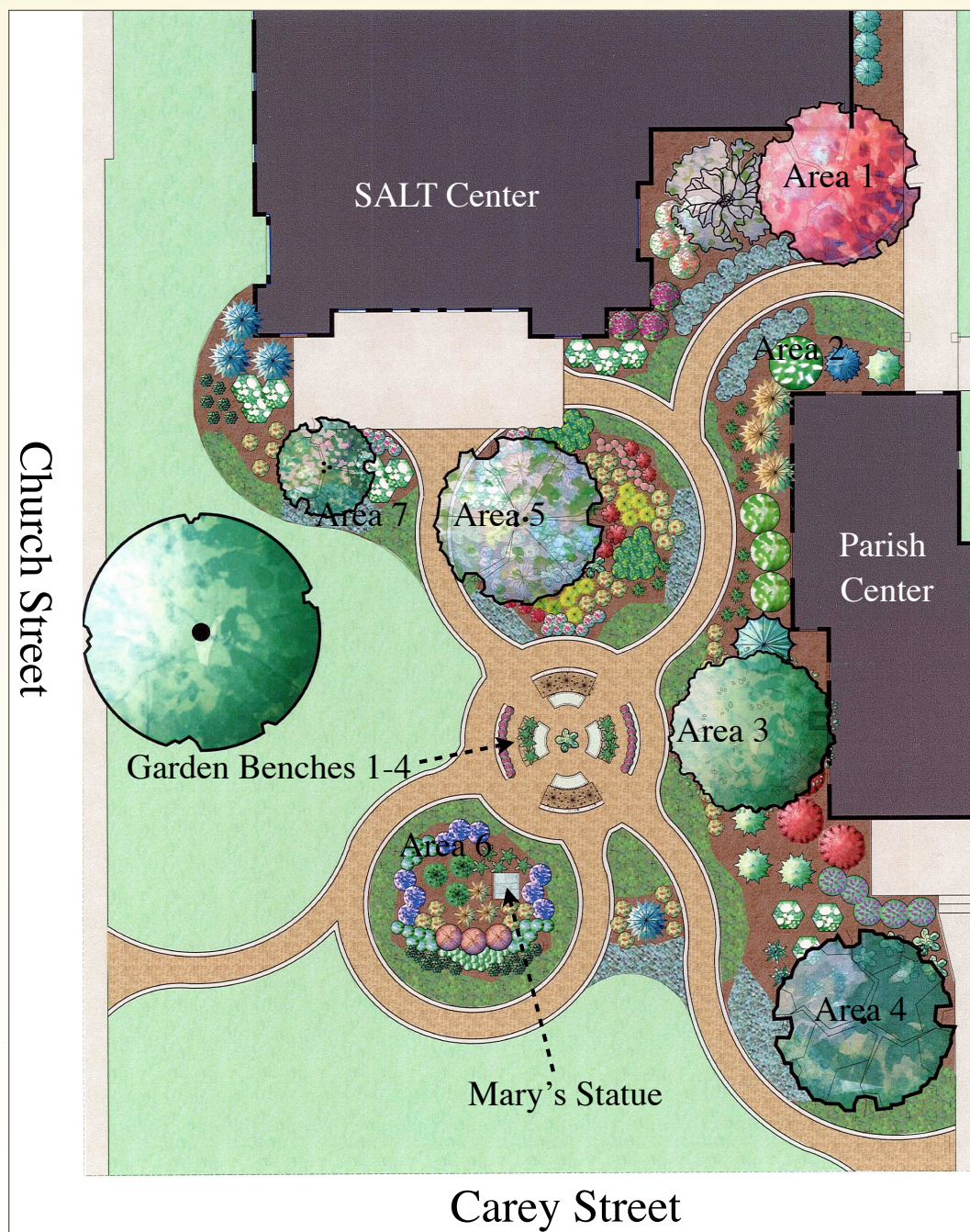
Personalize your 8X8 inch brick paver to be placed
in each plot with up to six lines of text,
12 characters per line

Other Options

Please inquire at the office if you are interested
in donating other items such as statuary, art work or
the steps that lead from the patio of the SALT Center
to the garden area. Every request must be approved
by the Pastoral Council

Purchase an engraved brick paver and create a lasting gift.
Your personal message becomes a part of our community
and part of our history. Engraved pavers and markers may
be given by individuals, families, businesses, or used to
commemorate weddings, confirmations, baptisms,
anniversaries, births, those who have died, or to honor
important people in our lives.

HERITAGE GARDENS AT LIGHT 0



Above graphic may not be exact representation of completed project.